

Monument Column Planter

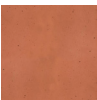
Monument Collection



PRODUCT INFO

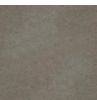
Description	Truly Monumental - the Column Planter is an eye-catching focal point from landscape to living room to lobby. Corinthian flutes and depth of texture gives the Monument Column a timeless, architectural dimension to enhance any space.	Construction	Solid, fiber reinforced, cast concrete - these are built for posterity. A drainage hole is centered in the base. Internal riser, plastic liner pot and foam rubber foot are included.
Dimensions	LG Overall: H:30" W:17" D:17" LG Interior: H:15.25" W:13.5" D:13.5" SM Overall: H:15" W:13" D:13" SM Interior: H:14.25" W:10.25" D:10.25"	Care	Wipe clean with a soft cloth. Safe for indoor and outdoor use.
Assembly	Fully Assembled	Warranty	3 years
Finishes	Choose between Adobe and Charcoal	Lead time	In stock ships in 2 business days Custom requests and backorders ship in 12 - 16 weeks
		Note	All Monument Collection pieces are architectural grade and therefor VERY heavy. Use caution while transporting these planters. Use mechanical or team assistance as needed.

CAST STONE



ADOBE

CAST STONE



CHARCOAL